



Ameritec Call Generator Product Catalog

Ameritec Call Generator Product Catalog

Overview

The Ameritec Fortissimo and Allegro product lines are the world's smallest, high-capacity network load generation products designed to test and qualify the voice telephony network. Developers responsible for system and interoperability testing can effectively evaluate maximum traffic rate, call completion, calling features, and voice and video call quality of service (QoS).

With the Allegro and Fortissimo developers can:

- Characterize system performance (calls per hour)
- Identify system capacity (simultaneous calls)
- Benchmark voice quality
- Quantify voice path impairments
- Verify calling features
- Test voice response and voicemail systems
- Automate regression testing
- Test network quality end-to-end

Whether it's a 2-wire analog circuit, a T1/E1 trunk, a DS3 or an IP network, you can count on the Fortissimo and Allegro product lines to quantitatively measure the quality of any given call.

Product Lines



Fortissimo Network Load Simulator

Fortissimo NLG-A

Analog (POTS) Network Load Simulator

The Fortissimo NLG-A is an analog network load generator that simulates 100 loop start telephony subscribers.

Part Number: AM-NLG-A

Fortissimo NLG-AF

Analog (POTS) Network Load Simulator with FAX call Support

The Fortissimo NLG-AF is an analog network load generator that simulates 50 loop start telephony subscribers and includes the ability to generate/receive FAX call traffic.

Part Number: AM-NLG-AF

Fortissimo NLG-AG

Analog (POTS) Network Load Simulator with Ground Start Support

The Fortissimo NLG-AG is an analog network load generator that simulates 50 loop or ground start telephony subscribers.

Part Number: AM-NLG-AG

Fortissimo NLG-IP

SIP Network Load Simulator

The Fortissimo NLG-IP is a SIP network load generator that simulates up to 192 SIP or 96 MGCP subscribers.

Part Number: AM-NLG-IP

Fortissimo NLG-H

4-Wire Handset/Headset Network Load Simulator

The Fortissimo NLG-H is a network load generator that simulates telephony subscribers connecting through an IP telephone set.

Part Number: AM-NLG-H

Product Lines



Fortissimo NLG-DS3-F

DS3 Network Load Simulator with FAX Call Support

The Fortissimo NLG-DS3-F is a DS3 network load generator that simulates telephony subscribers including the ability to generate/receive FAX call traffic.

Part Number: AM-NLG-DS3F

Fortissimo NLG-M13

T1/E1 Multiplexer

The Fortissimo NLG-M13 is a T1/E1 Multiplexer that works in conjunction with a Fortissimo NLG-DS3-F to provide 28 T1 or 21 E1 circuits.

Part Number: AM-NLG-M13

Fortissimo NLG-OC3-VT

OC3/STM-1 Multiplexer

The Fortissimo NLG-OC3-VT is an OC3/STM-1 Multiplexer that works in conjunction with 1-3 Fortissimo NLG-DS3-F units to create an OC3 or STM-1 span.

Part Number: AM-NLG-OC3VT

Fortissimo NLG-FRM

Fax Resource Module

The Fortissimo NLG-FRM is a Fax Resource Module for the NLG-AF and NLG-DS3-F units.

Part Number: AM-NLG-FRM

Fortissimo NLG-CTM

Cable Telephony Multiplexer

The Fortissimo Cable Telephony Multiplexer is a stand-alone Fortissimo unit that works in conjunction with the Fortissimo IP Call Generator. Developers can simulate uniquely configured SIP traffic through cable modems and provide unique Ethernet MAC addresses and VLAN support.

Part Number: AM-NLG-CTM

Product Lines



Allegro Network Load Simulator

Allegro ALG-A

Analog Desktop Network Load Generator

The Allegro is a network load generator that simulates 2-wire analog loop/ground start subscribers.

Part Number: AM-ALG-A

Allegro ALG-D

Digital Desktop Network Load Generator

The Allegro is a network load generator that simulates digital T1/E1, SS7, and PRI subscribers.

Part Number: AM-ALG-D

Allegro ALG-IP

SIP Desktop Network Load Generator

The Allegro is a network load generator that simulates up to 8 SIP or MGCP subscribers.

Part Number: AM-ALG-IP

Product Lines

AM3-QoS Responders

AM3-QoS

2-Wire QoS Responder

The AM3-QoS responder is a 2-wire QoS unit. It is designed to be placed anywhere in the network and automatically answers an incoming call from an Allegro or Fortissimo unit. Upon answer it performs end-to-end QoS tests with a centralized call generator unit.

Part Number: AM3-QOS

AM3-QoS Plus

2-Wire QoS Responder

The AM3-QoS+ responder is a 2-wire analog unit that works in conjunction with the GoldenWatch Control Software. It is designed to be placed anywhere in the network and can be configured to dial other AM3-QoS+ units or to answer automatically an incoming call. With each call the unit performs end-to-end QoS tests and call completion analysis.

Part Number: AM3-QOS+

GoldenWatch

GoldenWatch Control Software

GoldenWatch is a PC based program that allows for the configuration of each AM3-QoS+ responder as well as a central depository for all statistics gathered by each of the responders. GoldenWatch has a built-in wizard function that allows for easy configuration and reporting screens are well designed for easy identification of problem areas within the network.

Part Number: AM250559

XpresScript

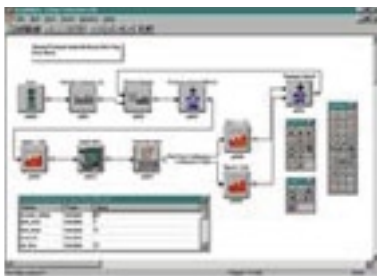
Graphical Call Sequence/Script Editor for Allegro Product Family

Ameritec's XpresScript is a Windows® based, easy to use, graphical script generation tool. It is an object oriented call case development tool that allows the user to create simple or complex test scenarios (call flow diagrams) using standard palettes for specific physical interfaces.

Part Number: AM240054



Responder	Line	Status	Last Update	Last Alarm	Temp	Int	Out	700	700	700
01-Dial	802/206-1105	OK	802/206-1105	802/206-1105	802/206-1105	802/206-1105	802/206-1105	802/206-1105	802/206-1105	802/206-1105
02-Dial	802/206-1105	OK	802/206-1105	802/206-1105	802/206-1105	802/206-1105	802/206-1105	802/206-1105	802/206-1105	802/206-1105
03-Dial	802/206-1105	OK	802/206-1105	802/206-1105	802/206-1105	802/206-1105	802/206-1105	802/206-1105	802/206-1105	802/206-1105
04-Dial	802/206-1105	OK	802/206-1105	802/206-1105	802/206-1105	802/206-1105	802/206-1105	802/206-1105	802/206-1105	802/206-1105
05-Dial	802/206-1105	OK	802/206-1105	802/206-1105	802/206-1105	802/206-1105	802/206-1105	802/206-1105	802/206-1105	802/206-1105
06-Dial	802/206-1105	OK	802/206-1105	802/206-1105	802/206-1105	802/206-1105	802/206-1105	802/206-1105	802/206-1105	802/206-1105
07-Dial	802/206-1105	OK	802/206-1105	802/206-1105	802/206-1105	802/206-1105	802/206-1105	802/206-1105	802/206-1105	802/206-1105
08-Dial	802/206-1105	OK	802/206-1105	802/206-1105	802/206-1105	802/206-1105	802/206-1105	802/206-1105	802/206-1105	802/206-1105
09-Dial	802/206-1105	OK	802/206-1105	802/206-1105	802/206-1105	802/206-1105	802/206-1105	802/206-1105	802/206-1105	802/206-1105
10-Dial	802/206-1105	OK	802/206-1105	802/206-1105	802/206-1105	802/206-1105	802/206-1105	802/206-1105	802/206-1105	802/206-1105
11-Dial	802/206-1105	OK	802/206-1105	802/206-1105	802/206-1105	802/206-1105	802/206-1105	802/206-1105	802/206-1105	802/206-1105
12-Dial	802/206-1105	OK	802/206-1105	802/206-1105	802/206-1105	802/206-1105	802/206-1105	802/206-1105	802/206-1105	802/206-1105
13-Dial	802/206-1105	OK	802/206-1105	802/206-1105	802/206-1105	802/206-1105	802/206-1105	802/206-1105	802/206-1105	802/206-1105
14-Dial	802/206-1105	OK	802/206-1105	802/206-1105	802/206-1105	802/206-1105	802/206-1105	802/206-1105	802/206-1105	802/206-1105
15-Dial	802/206-1105	OK	802/206-1105	802/206-1105	802/206-1105	802/206-1105	802/206-1105	802/206-1105	802/206-1105	802/206-1105
16-Dial	802/206-1105	OK	802/206-1105	802/206-1105	802/206-1105	802/206-1105	802/206-1105	802/206-1105	802/206-1105	802/206-1105
17-Dial	802/206-1105	OK	802/206-1105	802/206-1105	802/206-1105	802/206-1105	802/206-1105	802/206-1105	802/206-1105	802/206-1105
18-Dial	802/206-1105	OK	802/206-1105	802/206-1105	802/206-1105	802/206-1105	802/206-1105	802/206-1105	802/206-1105	802/206-1105
19-Dial	802/206-1105	OK	802/206-1105	802/206-1105	802/206-1105	802/206-1105	802/206-1105	802/206-1105	802/206-1105	802/206-1105
20-Dial	802/206-1105	OK	802/206-1105	802/206-1105	802/206-1105	802/206-1105	802/206-1105	802/206-1105	802/206-1105	802/206-1105
21-Dial	802/206-1105	OK	802/206-1105	802/206-1105	802/206-1105	802/206-1105	802/206-1105	802/206-1105	802/206-1105	802/206-1105
22-Dial	802/206-1105	OK	802/206-1105	802/206-1105	802/206-1105	802/206-1105	802/206-1105	802/206-1105	802/206-1105	802/206-1105
23-Dial	802/206-1105	OK	802/206-1105	802/206-1105	802/206-1105	802/206-1105	802/206-1105	802/206-1105	802/206-1105	802/206-1105
24-Dial	802/206-1105	OK	802/206-1105	802/206-1105	802/206-1105	802/206-1105	802/206-1105	802/206-1105	802/206-1105	802/206-1105
25-Dial	802/206-1105	OK	802/206-1105	802/206-1105	802/206-1105	802/206-1105	802/206-1105	802/206-1105	802/206-1105	802/206-1105
26-Dial	802/206-1105	OK	802/206-1105	802/206-1105	802/206-1105	802/206-1105	802/206-1105	802/206-1105	802/206-1105	802/206-1105
27-Dial	802/206-1105	OK	802/206-1105	802/206-1105	802/206-1105	802/206-1105	802/206-1105	802/206-1105	802/206-1105	802/206-1105
28-Dial	802/206-1105	OK	802/206-1105	802/206-1105	802/206-1105	802/206-1105	802/206-1105	802/206-1105	802/206-1105	802/206-1105
29-Dial	802/206-1105	OK	802/206-1105	802/206-1105	802/206-1105	802/206-1105	802/206-1105	802/206-1105	802/206-1105	802/206-1105
30-Dial	802/206-1105	OK	802/206-1105	802/206-1105	802/206-1105	802/206-1105	802/206-1105	802/206-1105	802/206-1105	802/206-1105
31-Dial	802/206-1105	OK	802/206-1105	802/206-1105	802/206-1105	802/206-1105	802/206-1105	802/206-1105	802/206-1105	802/206-1105
32-Dial	802/206-1105	OK	802/206-1105	802/206-1105	802/206-1105	802/206-1105	802/206-1105	802/206-1105	802/206-1105	802/206-1105
33-Dial	802/206-1105	OK	802/206-1105	802/206-1105	802/206-1105	802/206-1105	802/206-1105	802/206-1105	802/206-1105	802/206-1105
34-Dial	802/206-1105	OK	802/206-1105	802/206-1105	802/206-1105	802/206-1105	802/206-1105	802/206-1105	802/206-1105	802/206-1105
35-Dial	802/206-1105	OK	802/206-1105	802/206-1105	802/206-1105	802/206-1105	802/206-1105	802/206-1105	802/206-1105	802/206-1105
36-Dial	802/206-1105	OK	802/206-1105	802/206-1105	802/206-1105	802/206-1105	802/206-1105	802/206-1105	802/206-1105	802/206-1105
37-Dial	802/206-1105	OK	802/206-1105	802/206-1105	802/206-1105	802/206-1105	802/206-1105	802/206-1105	802/206-1105	802/206-1105
38-Dial	802/206-1105	OK	802/206-1105	802/206-1105	802/206-1105	802/206-1105	802/206-1105	802/206-1105	802/206-1105	802/206-1105
39-Dial	802/206-1105	OK	802/206-1105	802/206-1105	802/206-1105	802/206-1105	802/206-1105	802/206-1105	802/206-1105	802/206-1105
40-Dial	802/206-1105	OK	802/206-1105	802/206-1105	802/206-1105	802/206-1105	802/206-1105	802/206-1105	802/206-1105	802/206-1105
41-Dial	802/206-1105	OK	802/206-1105	802/206-1105	802/206-1105	802/206-1105	802/206-1105	802/206-1105	802/206-1105	802/206-1105
42-Dial	802/206-1105	OK	802/206-1105	802/206-1105	802/206-1105	802/206-1105	802/206-1105	802/206-1105	802/206-1105	802/206-1105
43-Dial	802/206-1105	OK	802/206-1105	802/206-1105	802/206-1105	802/206-1105	802/206-1105	802/206-1105	802/206-1105	802/206-1105
44-Dial	802/206-1105	OK	802/206-1105	802/206-1105	802/206-1105	802/206-1105	802/206-1105	802/206-1105	802/206-1105	802/206-1105
45-Dial	802/206-1105	OK	802/206-1105	802/206-1105	802/206-1105	802/206-1105	802/206-1105	802/206-1105	802/206-1105	802/206-1105
46-Dial	802/206-1105	OK	802/206-1105	802/206-1105	802/206-1105	802/206-1105	802/206-1105	802/206-1105	802/206-1105	802/206-1105
47-Dial	802/206-1105	OK	802/206-1105	802/206-1105	802/206-1105	802/206-1105	802/206-1105	802/206-1105	802/206-1105	802/206-1105
48-Dial	802/206-1105	OK	802/206-1105	802/206-1105	802/206-1105	802/206-1105	802/206-1105	802/206-1105	802/206-1105	802/206-1105
49-Dial	802/206-1105	OK	802/206-1105	802/206-1105	802/206-1105	802/206-1105	802/206-1105	802/206-1105	802/206-1105	802/206-1105
50-Dial	802/206-1105	OK	802/206-1105	802/206-1105	802/206-1105	802/206-1105	802/206-1105	802/206-1105	802/206-1105	802/206-1105



Fortissimo NLG-A

Analog (POTS) Network Load Simulator



What Can It Test?

Applications that previously were too costly to test automatically can now be easily automated with the Fortissimo.

- Central Office or PBX Switches and Network
- 3rd Generation Voice Over Packet Systems
- Intelligent Network (IN) Applications
- Voice Mail Systems
- Computer Telephony Integration (CTI) systems and applications
- Automatic Call Distribution (ACD) systems
- DS3 systems
- Paging Systems

What Is It?

The Fortissimo is an analog network load generator that simulates telephony subscribers placing calls into the network. The unit gives the user flexibility to serve a wide range of applications associated with switch and network testing. The Fortissimo allows the user to test highly complex call scenarios and interactive applications under high call loads on hundreds of lines simultaneously in a dedicated lab environment.

What Does It Do?

The Ameritec Fortissimo has the ability to simulate high volumes of subscriber calls. This high volume of bulk call generation can be combined with complex call testing capability. Through the use of user defined call scripts and line protocols, users can tailor test scenarios to meet a wide range of testing requirements.

Subscribers can be simulated on 100 loop start circuits.

How Does It Work?

The actions of each simulated subscriber are independently controlled through unique parameter fields defined in user programmed Call Scripts. Call Scripts include capabilities for testing signaling, dialing, Voice over Packet, QoS (GMOS, G-PSQM, R-Factor) digit decoding, tone sending, path verification, and tone receive. The Scripts define calling patterns and can simulate practically any action a live caller can perform. Scripts can also simulate multiple subscribers allowing testing of multiple-party calls such as conference calling.

The Ameritec Conductor GUI, a Windows® based Graphical User Interface, allows the user to create test systems. The user is now able to create a battery of tests, create traffic profiles, load test cases, view test results and create reports.

With the addition of the Ameritec XpresScript the user is able to develop sophisticated test scripts by simply drawing the test sequence. Call Scripts are easily

developed by dragging, dropping and interconnecting icons to create a graphical Call Flow Diagram. This Call Flow Diagram can easily be loaded into the Fortissimo using the Conductor.

Options and Accessories

- Quality of Service - QoS Software License (One optional per unit) (Part Number: AM250531)
- Command Set Software License (One optional per unit) (Part Number: AM250532)
- Extended Feature Set Software License (One optional per unit) (Part Number: AM250538)
- Fax/Data Modem - MQoS Software License (one optional per unit, REQUIRES QoS) (Part Number: AM240107)
- XpresScript Scripting Tool (Part Number: AM240091)
- ALG/NLG Protocol Development Kit (Part Number: AM190005)
- Softools Assembler/Linker (Part Number AM240029)
- Voice Replay Option (Part Number: AM250556)
- Power Cord (One optional per unit): U.K. Power Cord (Part Number: AM250500) or European Power Cord (Part Number: AM250540)

Fortissimo NLG-AF

Analog (POTS) Network Load Simulator with FAX Call Support



What Can It Test?

Applications that previously were too costly to test automatically can now be easily automated with the Fortissimo.

- Central Office or PBX Switches and Network
- 3rd Generation Voice Over Packet Systems
- Intelligent Network (IN) Applications
- Voice Mail Systems
- Computer Telephony Integration (CTI) systems and applications
- Automatic Call Distribution (ACD) systems
- DS3 systems
- Paging Systems

What Is It?

The Fortissimo is an analog network load generator that simulates telephony subscribers placing calls into the network including the ability to generate/receive FAX call traffic. The unit gives the user flexibility to serve a wide range of applications associated with switch and network testing. The Fortissimo allows the user to test highly complex call scenarios and interactive applications under high call loads on hundreds of lines simultaneously in a dedicated lab environment.

What Does It Do?

The Ameritec Fortissimo has the ability to simulate high volumes of subscriber calls. This high volume of bulk call generation can be combined with complex call testing capability. Through the use of user defined call scripts and line protocols, users can tailor test scenarios to meet a wide range of testing requirements.

Subscribers can be simulated on 50 loop start circuits and support up to 32 FAX calls. FAX traffic requires the use of the NLG-FRM unit.

How Does It Work?

The actions of each simulated subscriber are independently controlled through unique parameter fields defined in user programmed Call Scripts. Call Scripts include capabilities for testing signaling, dialing, Voice over Packet, QoS (GMOS, G-PSQM, R-Factor) digit decoding, tone sending, path verification, and tone receive. The Scripts define calling patterns and can simulate practically any action a live caller can perform. Scripts can also simulate multiple subscribers allowing testing of multiple-party calls such as conference calling.

The Ameritec Conductor GUI, a Windows® based Graphical User Interface, allows the user to create test systems. The user is now able to create a battery of tests, create traffic profiles, load test cases, view test results and create reports.

With the addition of the Ameritec

XpresScript the user is able to develop sophisticated test scripts by simply drawing the test sequence. Call Scripts are easily developed by dragging, dropping and interconnecting icons to create a graphical Call Flow Diagram. This Call Flow Diagram can easily be loaded into the Fortissimo using the Conductor.

Options and Accessories

- Quality of Service - QoS Software License (One optional per unit) (Part Number: AM250531)
- Command Set Software License (One optional per unit) (Part Number: AM250532)
- Extended Feature Set Software License (One optional per unit) (Part Number: AM250538)
- Fax/Data Modem - MQoS Software License (one optional per unit, REQUIRES QoS) (Part Number: AM240107)
- XpresScript Scripting Tool (Part Number: AM240091)
- ALG/NLG Protocol Development Kit (Part Number: AM190005)
- Softtools Assembler/Linker (Part Number AM240029)
- Voice Replay Option (Part Number: AM250556)
- NLG-FRM Fax Resource Module (Part Number: AM-NLG-FRM)
- Power Cord (One optional per unit): U.K. Power Cord (Part Number: AM250500) or European Power Cord (Part Number: AM250540)

Fortissimo NLG-AG

Analog (POTS) Network Load Simulator



What Can It Test?

Applications that previously were too costly to test automatically can now be easily automated with the Fortissimo.

- Central Office or PBX Switches and Network
- 3rd Generation Voice Over Packet Systems
- Intelligent Network (IN) Applications
- Voice Mail Systems
- Computer Telephony Integration (CTI) systems and applications
- Automatic Call Distribution (ACD) systems
- DS3 systems
- Paging Systems

What Is It?

The Fortissimo is an analog network load generator that simulates telephony subscribers placing calls into the network. The unit gives the user flexibility to serve a wide range of applications associated with switch and network testing. The Fortissimo allows the user to test highly complex call scenarios and interactive applications under high call loads on hundreds of lines simultaneously in a dedicated lab environment.

What Does It Do?

The Ameritec Fortissimo has the ability to simulate high volumes of subscriber calls. This high volume of bulk call generation can be combined with complex call testing capability. Through the use of user defined call scripts and line protocols, users can tailor test scenarios to meet a wide range of testing requirements.

Subscribers can be simulated on 50 loop start and ground start circuits via software selectable parameters.

How Does It Work?

The actions of each simulated subscriber are independently controlled through unique parameter fields defined in user programmed Call Scripts. Call Scripts include capabilities for testing signaling, dialing, Voice over Packet, QoS (GMOS, G-PSQM, R-Factor) digit decoding, tone sending, path verification, and tone receive. The Scripts define calling patterns and can simulate practically any action a live caller can perform. Scripts can also simulate multiple subscribers allowing testing of multiple-party calls such as conference calling.

The Ameritec Conductor GUI, a Windows® based Graphical User Interface, allows the user to create test systems. The user is now able to create a battery of tests, create traffic profiles, load test cases, view test results and create reports.

With the addition of the Ameritec XpresScript the user is able to develop sophisticated test scripts by simply drawing

the test sequence. Call Scripts are easily developed by dragging, dropping and interconnecting icons to create a graphical Call Flow Diagram. This Call Flow Diagram can easily be loaded into the Fortissimo using the Conductor.

Options and Accessories

- Quality of Service - QoS Software License (One optional per unit) (Part Number: AM250531)
- Command Set Software License (One optional per unit) (Part Number: AM250532)
- Extended Feature Set Software License (One optional per unit) (Part Number: AM250538)
- Fax/Data Modem - MQoS Software License (one optional per unit, REQUIRES QoS) (Part Number: AM240107)
- XpresScript Scripting Tool (Part Number: AM240091)
- ALG/NLG Protocol Development Kit (Part Number: AM190005)
- Softtools Assembler/Linker (Part Number AM240029)
- Voice Replay Option (Part Number: AM250556)
- Power Cord (One optional per unit): U.K. Power Cord (Part Number: AM250500) or European Power Cord (Part Number: AM250540)

Fortissimo NLG-IP

SIP Network Load Simulator



What Can It Test?

Applications that previously were too costly to test automatically can now be easily automated with the Fortissimo.

- IP-IP and IP-PSTN Applications
- 3rd Generation Voice Over Packet Systems
- Next Generation Hardware/Software Platforms
- Voice Quality and Integrity
- G.711 and G.729 Applications

What Is It?

The Fortissimo is a SIP network load generator that simulates SIP subscribers placing calls into the network. The unit gives the user flexibility to serve a wide range of applications associated with switch and network testing. The Fortissimo allows the user to test highly complex call scenarios and interactive applications under high call loads on hundreds of lines simultaneously in a dedicated lab environment.

What Does It Do?

The Ameritec Fortissimo has the ability to simulate high volumes of SIP subscriber calls. This high volume of bulk call generation can be combined with complex call testing capability. Through the use of user defined call scripts and line protocols, users can tailor test scenarios to meet a wide range of testing requirements.

Each unit supports 192 SIP subscribers being simulated with full bearer path testing along with the ability to support registration, authentication, G.711/G.729 encoding and proxy servers via software selectable parameters.

How Does It Work?

The actions of each simulated subscriber are independently controlled through unique parameter fields defined in user programmed Call Scripts. Call Scripts include capabilities for testing signaling, dialing, Voice over Packet, QoS (GMOS, G-PSQM, G-PESQ R-Factor,) digit decoding, tone sending, path verification, and tone receive. The Scripts define calling patterns and can simulate practically any action a live caller can perform. Scripts can also simulate multiple subscribers allowing testing of multiple-party calls such as conference calling.

The Ameritec Conductor GUI, a Windows® based Graphical User Interface, allows the user to create test systems. The user is now able to create a battery of tests, create traffic profiles, load test cases,

view test results and create reports.

With the addition of the Ameritec XpresScript the user is able to develop sophisticated test scripts by simply drawing the test sequence. Call Scripts are easily developed by dragging, dropping and interconnecting icons to create a graphical Call Flow Diagram. This Call Flow Diagram can easily be loaded into the Fortissimo using the Conductor.

Options and Accessories

- G.729 Codec Support Software License (0-2 options per unit, one per 96 lines) Part Number 250536
- MGCP Support - MGCP Software License, 48 lines (0-2 options per unit, one per side) (Part Number: 240095)
- Quality of Service - QoS Software License (One optional per unit) (Part Number: AM250531)
- Command Set Software License (One optional per unit) (Part Number: AM250532)
- Extended Feature Set Software License (One optional per unit) (Part Number: AM250538)
- Fax/Data Modem - MQoS Software License (one optional per unit, REQUIRES QoS) (Part Number: AM240107)
- XpresScript Scripting Tool (Part Number: AM240091)
- ALG/NLG Protocol Development Kit (Part Number: AM190005)
- Softtools Assembler/Linker (Part Number AM240029)
- Voice Replay Option (Part Number: AM250556)
- T.38 FAX Option with 48 FAX endpoints (Part Number: AM240112)
- Video Skew Factor and MDI Option (Part Number: AM250558)
- Power Cord (One optional per unit): U.K. Power Cord (Part Number: AM250500) or European Power Cord (Part Number: AM250540)

Fortissimo NLG-H

4-Wire Handset/Headset Network Load Simulator



What Can It Test?

Applications that previously were too costly to test automatically can now be easily automated with the Fortissimo.

- Telephone to Telephone Quality of Service Testing
- 3rd Generation Voice Over Packet Systems

What Is It?

The Fortissimo is a network load generator that simulates telephony subscribers placing calls into the network by connecting through the IP telephone set. The unit gives the user flexibility to serve a wide range of applications associated with switch and network testing. The Fortissimo allows the user to test highly complex call scenarios and interactive applications under high call loads on hundreds of lines simultaneously in a dedicated lab environment.

What Does It Do?

The Ameritec Fortissimo has the ability to simulate high volumes of subscriber calls. This high volume of bulk call generation can be combined with complex call testing capability. Through the use of user defined call scripts and line protocols, users can tailor test scenarios to meet a wide range of testing requirements.

Subscribers can be simulated on 48, 4-wire handset/headset circuits via software selectable parameters.

How Does It Work?

The actions of each simulated subscriber are independently controlled through unique parameter fields defined in user programmed Call Scripts. Call Scripts include capabilities for testing signaling, dialing, Voice over Packet, QoS (GMOS, G-PSQM, R-Factor) digit decoding, tone sending, path verification, and tone receive. The Scripts define calling patterns and can simulate practically any action a live caller can perform. Scripts can also simulate multiple subscribers allowing testing of multiple-party calls such as conference calling.

The Ameritec Conductor GUI, a Windows® based Graphical User Interface, allows the user to create test systems. The user is now able to create a battery of tests, create traffic profiles, load test cases, view test results and create reports.

With the addition of the Ameritec XpresScript the user is able to develop sophisticated test scripts by simply drawing the test sequence. Call Scripts are easily developed by dragging, dropping and interconnecting icons to create a graphical Call Flow Diagram. This Call Flow Diagram can easily be loaded into the Fortissimo using the Conductor.

Options and Accessories

- Quality of Service - QoS Software License (One optional per unit) (Part Number: AM250531)
- Command Set Software License (One optional per unit) (Part Number: AM250532)
- Extended Feature Set Software License (One optional per unit) (Part Number: AM250538)
- Fax/Data Modem - MQoS Software License (one optional per unit, REQUIRES QoS) (Part Number: AM240107)
- XpresScript Scripting Tool (Part Number: AM240091)
- ALG/NLG Protocol Development Kit (Part Number: AM190005)
- Softools Assembler/Linker (Part Number AM240029)
- Voice Replay Option (Part Number: AM250556)
- Power Cord (One optional per unit): U.K. Power Cord (Part Number: AM250500) or European Power Cord (Part Number: AM250540)

Fortissimo NLG-DS3-F

DS3 Network Load Simulator with FAX Call Support



What Can It Test?

Applications that previously were too costly to test automatically can now be easily automated with the Fortissimo.

- Central Office or PBX Switches and Network
- 3rd Generation Voice Over Packet Systems
- Intelligent Network (IN) Applications
- Voice Mail Systems
- Computer Telephony Integration (CTI) systems and applications
- Automatic Call Distribution (ACD) systems
- DS3 systems
- Paging Systems

What Is It?

The Fortissimo is a DS3 network load generator that simulates telephony subscribers placing calls into the network including the ability to generate/receive FAX call traffic. The unit gives the user flexibility to serve a wide range of applications associated with switch and network testing. The Fortissimo allows the user to test highly complex call scenarios and interactive applications under high call loads on hundreds of lines simultaneously in a dedicated lab environment.

What Does It Do?

The Ameritec Fortissimo has the ability to simulate high volumes of subscriber calls. This high volume of bulk call generation can be combined with complex call testing capability. Through the use of user defined call scripts and line protocols, users can tailor test scenarios to meet a wide range of testing requirements.

Each unit supports 1 DS3 with subscribers being simulated on T1, E1, Primary Rate ISDN, and SS7 circuits via software selectable parameters. Up to 32 channels of FAX can be supported per unit. FAX traffic requires the use of the NLG-FRM unit.

How Does It Work?

The actions of each simulated subscriber are independently controlled through unique parameter fields defined in user programmed Call Scripts. Call Scripts include capabilities for testing signaling, dialing, Voice over Packet, QoS (GMOS, G-PSQM, R-Factor) digit decoding, tone sending, path verification, and tone receive. The Scripts define calling patterns and can simulate practically any action a live caller can perform. Scripts can also simulate multiple subscribers allowing testing of multiple-party calls such as conference calling.

The Ameritec Conductor GUI, a Windows® based Graphical User Interface, allows the user to create test systems. The user is now able to create a battery of tests, create traffic profiles, load test cases,

view test results and create reports.

With the addition of the Ameritec XpresScript the user is able to develop sophisticated test scripts by simply drawing the test sequence. Call Scripts are easily developed by dragging, dropping and interconnecting icons to create a graphical Call Flow Diagram. This Call Flow Diagram can easily be loaded into the Fortissimo using the Conductor.

Options and Accessories

- Quality of Service - QoS Software License (One optional per unit) (Part Number: AM250531)
- Command Set Software License (One optional per unit) (Part Number: AM250532)
- Extended Feature Set Software License (One optional per unit) (Part Number: AM250538)
- GR303 Software License (One optional per unit) (Part Number: AM250537)
- XpresScript Scripting Tool (Part Number: AM240091)
- ALG/NLG Protocol Development Kit (Part Number: AM190005)
- Softools Assembler/Linker (Part Number AM240029)
- V.35 Adapter for NLG-DS3-F (Part Number: AM240104)
- Voice Replay Option (Part Number: AM250556)
- DASS2/DPNSS Option (Part Number: AM240109)
- Call Switching Feature Set (Part Number: AM240113)
- NLG-FRM Fax Resource Module (Part Number: AM-NLG-FRM)
- Power Cord (One optional per unit): U.K. Power Cord (Part Number: AM250500) or European Power Cord (Part Number: AM250540)

Fortissimo NLG-M13

T1/E1 Multiplexer



What Can It Test?

Applications that previously were too costly to test automatically can now be easily automated with the Fortissimo.

- Central Office or PBX Switches and Network
- 3rd Generation Voice Over Packet Systems
- Intelligent Network (IN) Applications
- Voice Mail Systems
- Computer Telephony Integration (CTI) systems and applications
- Automatic Call Distribution (ACD) systems
- DS3 systems
- Paging Systems

What Is It?

The Fortissimo is a T1/E1 multiplexer that works in conjunction with a Fortissimo NLG-DS3-F to provide 28 T1 or 21 E1 circuits. The unit gives the user flexibility to serve a wide range of applications associated with switch and network testing. The Fortissimo allows the user to test highly complex call scenarios and interactive applications under high call loads on hundreds of lines simultaneously in a dedicated lab environment.

What Does It Do?

The Ameritec Fortissimo has the ability to simulate high volumes of subscriber calls. This high volume of bulk call generation can be combined with complex call testing capability. Through the use of user defined call scripts and line protocols, users can tailor test scenarios to meet a wide range of testing requirements.

Subscribers can be simulated on T1, E1, Primary Rate ISDN, and SS7 circuits via software selectable parameters.

How Does It Work?

The actions of each simulated subscriber are independently controlled through unique parameter fields defined in user programmed Call Scripts. Call Scripts include capabilities for testing signaling, dialing, Voice over Packet, QoS (GMOS, G-PSQM, R-Factor) digit decoding, tone sending, path verification, and tone receive. The Scripts define calling patterns and can simulate practically any action a live caller can perform. Scripts can also simulate multiple subscribers allowing testing of multiple-party calls such as conference calling.

The Ameritec Conductor GUI, a Windows® based Graphical User Interface, allows the user to create test systems. The user is now able to create a battery of tests, create traffic profiles, load test cases, view test results and create reports.

With the addition of the Ameritec XpresScript the user is able to develop sophisticated test scripts by simply drawing

the test sequence. Call Scripts are easily developed by dragging, dropping and interconnecting icons to create a graphical Call Flow Diagram. This Call Flow Diagram can easily be loaded into the Fortissimo using the Conductor.

Options and Accessories

- Power Cord (One optional per unit): U.K. Power Cord (Part Number: AM250500) or European Power Cord (Part Number: AM250540)

Fortissimo NLG-OC3-VT

OC3/STM-1 Multiplexer



What Can It Test?

Applications that previously were too costly to test automatically can now be easily automated with the Fortissimo.

- Central Office or PBX Switches and Network
- 3rd Generation Voice Over Packet Systems
- Intelligent Network (IN) Applications
- Voice Mail Systems
- Computer Telephony Integration (CTI) systems and applications
- Automatic Call Distribution (ACD) systems
- DS3 systems
- Paging Systems

What Is It?

The Fortissimo is an OC3/STM-1 multiplexer that works in conjunction with 1-3 Fortissimo NLG-DS3-F units to create an OC3 or STM-1 span. The unit gives the user flexibility to serve a wide range of applications associated with switch and network testing. The Fortissimo allows the user to test highly complex call scenarios and interactive applications under high call loads on hundreds of lines simultaneously in a dedicated lab environment.

What Does It Do?

The Ameritec Fortissimo has the ability to simulate high volumes of subscriber calls. This high volume of bulk call generation can be combined with complex call testing capability. Through the use of user defined call scripts and line protocols, users can tailor test scenarios to meet a wide range of testing requirements.

Subscribers can be simulated on T1, E1, Primary Rate ISDN, and SS7 circuits via software selectable parameters. The unit supports one OC3 or STM-1 span complete with virtual tributary functionality.

How Does It Work?

The actions of each simulated subscriber are independently controlled through unique parameter fields defined in user programmed Call Scripts. Call Scripts include capabilities for testing signaling, dialing, Voice over Packet, QoS (GMOS, G-PSQM, R-Factor) digit decoding, tone sending, path verification, and tone receive. The Scripts define calling patterns and can simulate practically any action a live caller can perform. Scripts can also simulate multiple subscribers allowing testing of multiple-party calls such as conference calling.

The Ameritec Conductor GUI, a Windows® based Graphical User Interface, allows the user to create test systems. The user is now able to create a battery of tests, create traffic profiles, load test cases, view test results and create reports.

With the addition of the Ameritec XpresScript the user is able to develop sophisticated test scripts by simply drawing the test sequence. Call Scripts are easily developed by dragging, dropping and interconnecting icons to create a graphical Call Flow Diagram. This Call Flow Diagram can easily be loaded into the Fortissimo using the Conductor.

Options and Accessories

- Power Cord (One optional per unit): U.K. Power Cord (Part Number: AM250500) or European Power Cord (Part Number: AM250540)

Fortissimo NLG-FRM

Fortissimo Fax Resource Module



What Can It Test?

Applications that previously were too costly to test automatically can now be easily automated with the Fortissimo.

- See Fortissimo NLG-AF and NLG-DS3-F

What Is It?

The Fortissimo NLG-FRM is a Fax Resource Module for the NLG-AF and NLG-DS3-F units. The unit gives the user flexibility to serve a wide range of applications associated with switch and network testing. The Fortissimo allows the user to test highly complex call scenarios and interactive applications under high call loads on hundreds of lines simultaneously in a dedicated lab environment.

What Does It Do?

The Ameritec Fortissimo has the ability to simulate high volumes of subscriber calls. This high volume of bulk call generation can be combined with complex call testing capability. Through the use of user defined call scripts and line protocols, users can tailor test scenarios to meet a wide range of testing requirements.

Used in combination with an analog (NLG-AF) or digital (NLG-DS3-F) unit, the NLG-FRM provides full-functioned fax call generation. For IP subscribers, Ameritec offers a software license for the NLG-IP product to provide T.38 fax generation capabilities.

How Does It Work?

The actions of each simulated subscriber are independently controlled through unique parameter fields defined in user programmed Call Scripts. Call Scripts include capabilities for testing signaling, dialing, Voice over Packet, QoS (GMOS, G-PSQM, R-Factor) digit decoding, tone sending, path verification, and tone receive. The Scripts define calling patterns and can simulate practically any action a live caller can perform. Scripts can also simulate multiple subscribers allowing testing of multiple-party calls such as conference calling.

The Ameritec Conductor GUI, a Windows® based Graphical User Interface, allows the user to create test systems. The user is now able to create a battery of tests, create traffic profiles, load test cases, view test results and create reports.

With the addition of the Ameritec XpresScript the user is able to develop sophisticated test scripts by simply drawing the test sequence. Call Scripts are easily developed by dragging, dropping and interconnecting icons to create a graphical Call Flow Diagram. This Call Flow Diagram can easily be loaded into the Fortissimo using the Conductor.

Fortissimo NLG-CTM

Cable Telephony Multiplexer



What Can It Test?

Applications that previously were too costly to test automatically can now be easily automated with the Fortissimo.

- Simulate “on-net” calls between cable subscribers
- Replicate “off-net” calls between cable subscribers and PSTN subscribers
- Run regression tests to verify new eMTA and CMTS software releases under load
- Simulate SIP phones and POTS lines connected to eMTAs
- Verify that CMTS interoperates with multiple eMTA product lines and various manufacturers

What Is It?

The Fortissimo Cable Telephony Multiplexer is a stand-alone Fortissimo unit that works in conjunction with the Fortissimo IP Call Generator. Developers can simulate uniquely configured SIP traffic through cable modems and provide unique Ethernet MAC addresses and VLAN support. The unit gives the user flexibility to serve a wide range of applications associated with switch and network testing. The Fortissimo allows the user to test highly complex call scenarios and interactive applications under high call loads on hundreds of lines simultaneously in a dedicated lab environment.

What Does It Do?

The Ameritec Fortissimo has the ability to simulate high volumes of subscriber calls. This high volume of bulk call generation can be combined with complex call testing capability. Through the use of user defined call scripts and line protocols, users can tailor test scenarios to meet a wide range of testing requirements.

When used in conjunction with the Fortissimo NLG-IP, the Cable Telephony Multiplexer provides unique IP and Ethernet MAC addresses per endpoint and supports 802.1Q VLAN tags.

How Does It Work?

The actions of each simulated subscriber are independently controlled through unique parameter fields defined in user programmed Call Scripts. Call Scripts include capabilities for testing signaling, dialing, Voice over Packet, QoS (GMOS, G-PSQM, R-Factor) digit decoding, tone sending, path verification, and tone receive. The Scripts define calling patterns and can simulate practically any action a live caller can perform. Scripts can also simulate multiple subscribers allowing testing of multiple-party calls such as conference calling.

The Ameritec Conductor GUI, a Windows® based Graphical User Interface,

allows the user to create test systems. The user is now able to create a battery of tests, create traffic profiles, load test cases, view test results and create reports.

With the addition of the Ameritec XpresScript the user is able to develop sophisticated test scripts by simply drawing the test sequence. Call Scripts are easily developed by dragging, dropping and interconnecting icons to create a graphical Call Flow Diagram. This Call Flow Diagram can easily be loaded into the Fortissimo using the Conductor.

Options and Accessories

- Power Cord (One optional per unit):
U.K. Power Cord (Part Number: AM250500) or European Power Cord (Part Number: AM250540)

Allegro ALG-A

Analog Desktop Network Load Generator



What Can It Test?

Applications that previously were too costly to test automatically can now be easily automated with Allegro.

- Central Office or PBX Switches and Network
- 3rd Generation Voice Over Packet Systems
- Intelligent Network (IN) Applications
- Voice Mail Systems
- Computer Telephony Integration (CTI) systems and applications
- Automatic Call Distribution (ACD) systems
- Paging Systems

What Is It?

The Allegro is a network load generator that simulates telephony subscribers placing calls into the network. The unit gives the user flexibility to serve a wide range of applications associated with switch and network testing. The Allegro allows the user to test highly complex call scenarios and interactive applications under load in a dedicated lab environment.

What Does It Do?

The Ameritec Allegro has the ability to simulate subscriber calls. This network call generation can be combined with complex call testing capability. Through the use of user defined call scripts and line protocols, users can tailor test scenarios to meet a wide range of testing requirements.

Subscribers can be simulated on 4 analog lines supporting loop and ground start protocols.

How Does It Work?

The actions of each simulated subscriber are independently controlled through unique parameter fields defined in user programmed Call Scripts. Call Scripts include capabilities for testing signaling, dialing, Voice over Packet, QoS (GMOS, G-PSQM, G-PESQ, R-Factor) digit decoding, tone sending, path verification, and tone receive. The Scripts define calling patterns and can simulate practically any action a live caller can perform.

The Ameritec Conductor GUI, a Windows® based Graphical User Interface, allows the user to create test systems. The user is now able to create a battery of tests, create traffic profiles, load test cases, view test results and create reports.

With the addition of the Ameritec XpresScript® the user is able to develop sophisticated test scripts by simply drawing the test sequence. Call Scripts are easily developed by dragging, dropping and interconnecting icons to create a graphical Call Flow Diagram. This Call Flow Diagram can easily be loaded into the Allegro unit using Conductor.

Options and Accessories

- Command Set Software License (One optional per unit) (Part Number: AM250532)
- Extended Feature Set Software License (One optional per unit) (Part Number: AM250538)
- Fax/Data Modem - MQoS Software License (One optional per unit) (Part Number: AM240107)
- GPS Hardware (One optional per unit) (Part Number: AM250534)
- Power Cord (One optional per unit): U.K. Power Cord (Part Number: AM250527) or European Power Cord (Part Number: AM250539)
- XpresScript Scripting Tool (Part Number: AM240091)
- ALG/NLG Protocol Development Kit (Part Number: AM190005)
- Softools Assembler/Linker (Part Number: AM240029)
- Voice Replay Option (Part Number: AM250556)

Allegro ALG-D

Digital Desktop Network Load Generator



What Can It Test?

Applications that previously were too costly to test automatically can now be easily automated with Allegro.

- Central Office or PBX Switches and Network
- 3rd Generation Voice Over Packet Systems
- Intelligent Network (IN) Applications
- Voice Mail Systems
- Computer Telephony Integration (CTI) systems and applications
- Automatic Call Distribution (ACD) systems
- Paging Systems

What Is It?

The Allegro is a network load generator that simulates telephony subscribers placing calls into the network. The unit gives the user flexibility to serve a wide range of applications associated with switch and network testing. The Allegro allows the user to test highly complex call scenarios and interactive applications under load in a dedicated lab environment.

What Does It Do?

The Ameritec Allegro has the ability to simulate subscriber calls. This network call generation can be combined with complex call testing capability. Through the use of user defined call scripts and line protocols, users can tailor test scenarios to meet a wide range of testing requirements.

Subscribers can be simulated on T1, E1, Primary Rate ISDN, CAS and SS7 circuits. Up to 4 T1/E1 circuits can be accommodated in a single unit.

How Does It Work?

The actions of each simulated subscriber are independently controlled through unique parameter fields defined in user programmed Call Scripts. Call Scripts include capabilities for testing signaling, dialing, Voice over Packet, QoS (GMOS, G-PSQM, G-PESQ, R-Factor) digit decoding, tone sending, path verification, and tone receive. The Scripts define calling patterns and can simulate practically any action a live caller can perform.

The Ameritec Conductor GUI, a Windows® based Graphical User Interface, allows the user to create test systems. The user is now able to create a battery of tests, create traffic profiles, load test cases, view test results and create reports.

With the addition of the Ameritec XpresScript® the user is able to develop sophisticated test scripts by simply drawing the test sequence. Call Scripts are easily developed by dragging, dropping and interconnecting icons to create a graphical Call Flow Diagram. This Call Flow Diagram can easily be loaded into the Allegro unit using Conductor.

Options and Accessories

- Digital License Key - Adds additional 2 T1/E1 spans for total of 4 spans (One optional per unit) (Part Number: AM240092)
- Command Set Software License (One optional per unit) (Part Number: AM250532)
- Extended Feature Set Software License (One optional per unit) (Part Number: AM250538)
- Fax/Data Modem - MQoS Software License (One optional per unit) (Part Number: AM240107)
- Power Cord (One optional per unit): U.K. Power Cord (Part Number: AM250527) or European Power Cord (Part Number: AM250539)
- XpresScript Scripting Tool (Part Number: AM240091)
- ALG/NLG Protocol Development Kit (Part Number: AM190005)
- Softtools Assembler/Linker (Part Number: AM240029)
- Voice Replay Option (Part Number: AM250556)
- DASS2/DPNSS Option (Part Number: 240109)

Allegro ALG-IP

SIP Desktop Network Load Generator



What Can It Test?

Applications that previously were too costly to test automatically can now be easily automated with Allegro.

- Central Office or PBX Switches and Network
- 3rd Generation Voice Over Packet Systems
- Intelligent Network (IN) Applications
- Voice Mail Systems
- Computer Telephony Integration (CTI) systems and applications
- Automatic Call Distribution (ACD) systems
- Paging Systems

What Is It?

The Allegro is a network load generator that simulates telephony subscribers placing calls into the network. The unit gives the user flexibility to serve a wide range of applications associated with switch and network testing. The Allegro allows the user to test highly complex call scenarios and interactive applications under load in a dedicated lab environment.

What Does It Do?

The Ameritec Allegro has the ability to simulate subscriber calls. This network call generation can be combined with complex call testing capability. Through the use of user defined call scripts and line protocols, users can tailor test scenarios to meet a wide range of testing requirements.

Subscribers can be simulated on 1-8 SIP ports with each call supporting full bearer channel testing functions.

How Does It Work?

The actions of each simulated subscriber are independently controlled through unique parameter fields defined in user programmed Call Scripts. Call Scripts include capabilities for testing signaling, dialing, Voice over Packet, QoS (GMOS, G-PSQM, G-PESQ, R-Factor) digit decoding, tone sending, path verification, and tone receive. The Scripts define calling patterns and can simulate practically any action a live caller can perform.

The Ameritec Conductor GUI, a Windows® based Graphical User Interface, allows the user to create test systems. The user is now able to create a battery of tests, create traffic profiles, load test cases, view test results and create reports.

With the addition of the Ameritec XpresScript® the user is able to develop sophisticated test scripts by simply drawing the test sequence. Call Scripts are easily developed by dragging, dropping and interconnecting icons to create a graphical Call Flow Diagram. This Call Flow Diagram can easily be loaded into the Allegro unit using Conductor.

Options and Accessories

- G.729 Codec Support - G.729 Software License, 8 lines (One optional per unit) (Part Number: AM250533)
- MGCP Support - MGCP Software License, 8 lines (One optional per unit) (Part Number: AM240095)
- Command Set - Command Set Software License (One optional per unit) (Part Number: AM250532)
- Extended Feature Set – Software License (One optional per unit) (Part Number: AM250538)
- Fax/Data Modem - MQoS Software License (One optional per unit) (Part Number: AM240107)
- Power Cord (One optional per unit): U.K. Power Cord (Part Number: AM250527) or European Power Cord (Part Number: AM250539)
- XpresScript Scripting Tool (Part Number: AM240091)
- ALG/NLG Protocol Development Kit (Part Number: AM190005)
- Softools Assembler/Linker (Part Number: AM240029)
- Voice Replay Option (Part Number: AM250556)

AM3-QoS 2-Wire QoS Responder

2-Wire QoS Responder



What Is It?

The AM3-QoS responder is a 2-wire QoS unit. It is designed to be placed anywhere in the network and answers automatically an incoming call. Upon answer it performs end-to-end QoS tests with a centralized call generator unit.

What Does It Do?

The AM3-QoS provides the user with the capability of testing QoS end-to-end without the need for a service technician. Once activated the unit works with a call generator to repetitively test the network to measure QoS scores.

How Does It Work?

Each AM3-QoS automatically answer an incoming call and immediately starts testing end-to-end with a central call generator unit. Using Ameritech's GoldenVoice technology, it is possible to continuously compute R-Factor, G-PESQ, G-MOS, G-PSQM scores to determine if any quality problems exist in the network.

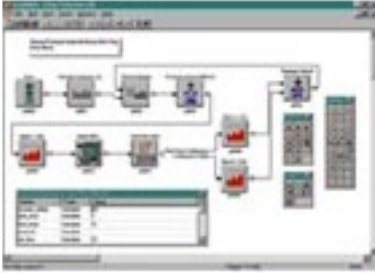
What Can It Test?

An AM3-QoS provides the following test functionality:

- Ability to test any network for Quality of Service without the need to dispatch a field technician.

XpresScript

Graphical Call Sequence/Script Editor for Allegro Product Family



What Is It?

Ameritec's XpresScript is a Windows® based, easy to use, graphical script generation tool. It is an object oriented call case development tool that allows the user to create simple or complex test scenarios (call flow diagrams) using provided standard palettes for specific physical interfaces.

What Does It Do?

XpresScript, as a companion product to Ameritec's FeatureCall® GUI, provides the user a simple, easy-to-use tool to create call scripts using a purely visual application. The user can create or modify call flow diagrams. These call flow diagrams can then be automatically converted to a script source file that can be loaded via the FeatureCall GUI and run on Ameritec's Allegro Call Generators.

How Does It Work?

The user can use the provided palettes or create a custom call flow diagram from the Palette Editor. Through the editor the user can add or change the script fragment associated with the icon by simply changing the content of the edit window. The Call Flow Diagram is the work area where the script is developed. As a new Call Flow Diagram is opened, the user places a Start Action Block to the work area. Additional Action and Power Blocks are added by dragging and dropping the blocks or icons from the Palette to the work area. Simply clicking two blocks connects the Action Blocks together. Script fragments are automatically validated to ensure conformance to rules and requirements defined in the Script Writing Guide. Once a call flow has been defined, the Call Flow Diagram is transformed into a script source file by clicking on the Create Script button.

The script source files created in XpresScript can be downloaded to an Ameritec Allegro generator and can perform simple or complex test scenarios.

What Can It Test?

XpresScript allows the user to rapidly modify or create call flow diagrams to comprehensively test any telephony application - for example: voice mail systems, credit card applications, Voice over Packet, etc.



All statements, technical information and recommendations related to the products herein are based upon information believed to be reliable or accurate. However, the accuracy or completeness thereof is not guaranteed, and no responsibility is assumed for any inaccuracies. The user assumes all risks and liability whatsoever in connection with the use of a product or its applications. JDSU reserves the right to change at any time without notice the design, specifications, function, fit or form of its products described herein, including withdrawal at any time of a product offered for sale herein. JDSU makes no representations that the products herein are free from any intellectual property claims of others. Please contact JDSU for more information. JDSU and the JDSU logo are trademarks of JDS Uniphase Corporation. Other trademarks are the property of their respective holders. © 2005 JDS Uniphase Corporation. All rights reserved. xxx 000 0507 AMERITEC.BR.CPO.TM.AE

Test & Measurement Regional Sales

NORTH AMERICA TEL: 1 866 228 3762 FAX: +1 301 353 9216	LATIN AMERICA TEL:+55 11 5503 3800 FAX:+55 11 5505 1598	ASIA PACIFIC TEL:+852 2892 0990 FAX:+852 2892 0770	EMEA TEL:+49 7121 86 2222 FAX:+49 7121 86 1222	WEBSITE: www.jdsu.com
---	--	---	---	--